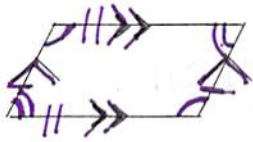


Notes on Quadrilaterals - 4 sided polygon

Name _____

Class Period _____

bisect: cut into 2 \cong (congruent) parts

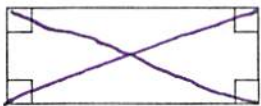


Parallelogram

Definition: A quadrilateral with 2 pairs of parallel sides.

- Properties:
- opposite sides are congruent
 - opposite angles are congruent
 - Diagonals bisect each other
 - consecutive (right next to each other) angles are supplementary

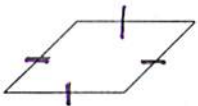
Special Parallelograms:



Rectangle

Definition: A parallelogram with 4 right angles

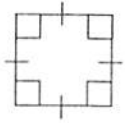
- Properties:
- All properties of a parallelogram
 - Diagonals are congruent.



Rhombus

Definition: A parallelogram with 4 congruent sides.

- Properties:
- All properties of a parallelogram
 - Diagonals are perpendicular
 - Diagonals are angle bisectors

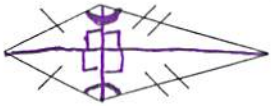


Square

Definition: A parallelogram with 4 right angles & 4 congruent sides.

Properties:

- All properties of a parallelogram, Rectangle & Rhombus.

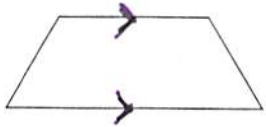


Kite

Definition: A quadrilateral with 2 pairs of consecutive congruent sides & no opposite sides congruent

Properties:

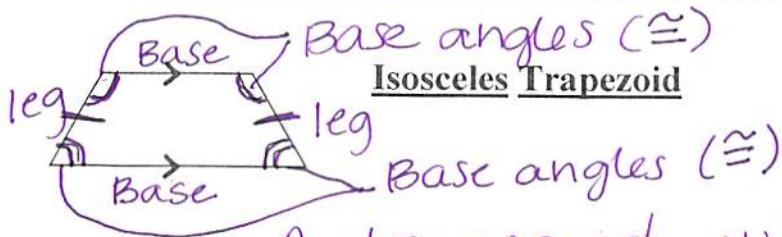
- Diagonals are perpendicular
- 1 pair of opposite angles are congruent



Trapezoid



Definition: A quadrilateral with 1 pair of opposite sides parallel



Isosceles Trapezoid

Definition: A trapezoid whose nonparallel opposite sides are congruent

Properties:

- Diagonals are congruent
 - Base angles are congruent
- (\sphericalangle)(\sphericalangle)